



Soochow University (SU), founded in 1900 in Suzhou, was the first western-style university in China. After it was re-established in 1951, SU became the first private university in Taiwan, with 6 schools, 23 departments, and 54 full-time degree programs.

## Globalize Your Future with Soochow University



### SCHOOLS/DEPARTMENTS

- 01 **School of Big Data Management** Big Data Management
- 02 **School of Business** Accounting, Business Administration, Computer Science and Information Management, Economics, Financial Engineering and Actuarial Mathematics, International Business
- 03 **School of Foreign Languages and Cultures** English Language and Literature, German Language and Culture, Japanese Language and Culture
- 04 **School of Law** Law
- 05 **School of Liberal Arts and Social Sciences** Chinese Literature, History, Human Rights Program, Music, Political Science, Philosophy, Social Work, Sociology
- 06 **School of Science** Chemistry, Mathematics, Microbiology, Physics, Psychology

### SCHOLARSHIPS

- Elite Study in Taiwan Scholarship Projects
- Scholarship for Overseas Chinese Students of Low Income Family
- Taiwan Scholarship and Huayu Enrichment Scholarship Program
- Regulations on SU Scholarship for Foreign Students
- Soochow University Oversea Students Admission Scholarship Issuance Guidelines



### TUITION 2018-2019 Academic Year

(For more information: <https://www-en.scu.edu.tw/tuition-and-miscellaneous-fees>)

School/Department	Tuition	School/Department	Tuition
Liberal Arts and Social Sciences; Foreign Languages and Cultures; Law	NTD\$48,370	Science; Big Data Management; Computer Science and Information Management	NTD\$55,990
Business (not including Computer Science and Information Management)	NTD\$49,110	Music	NTD\$56,460 (not including instruction fee)



The School of Business  
acquired the AACSB  
accreditation in 2017



1111人力銀行  
與時報周刊調查

"Top Comprehensive  
Private University  
Award" in 2017



遠見雜誌調查

"Enterprises' Favorite  
Graduates" among private  
comprehensive universities  
in 2016

### GLOBAL BUSINESS PROGRAM

English Taught Graduate Program



GBP Website

The Global Business Program (GBP) is a two-year business program specializing in the fields of Marketing Management, Financial Management, Operations Management, Human Resources Management, and Management Information System. It provides students with modern-day knowledge, proven skills and wide-range abilities to excel in any international business setting in the 21st century.

#### Why Choose GBP

- AACSB accredited
- World-class faculty
- Outstanding reputation for teaching excellence
- Excellent connections with world-leading organizations

#### International Academic Network

The School of Business has established reciprocal school-level student/faculty exchange programs and dual degree programs with some of the most prestigious business schools worldwide. Students are encouraged to apply for exchange or dual degree programs at the school's partnerships, in order to enrich their studies by experiencing different cultural and business environments.



#### The Learning Experience at GBP



Vina/Indonesia

I met different kinds of friends from different countries, learnt so much from teachers teaching through different kinds of approaches.



Arjan Boom/the Netherlands

The GBP for me is a great experience to expand my horizons. The courses are interesting and easy to follow. It's a great pleasure to live in this new culture and meet all these great people.

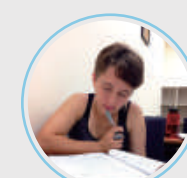
### CHINESE LANGUAGE CENTER (CLC)

Learn Chinese in Everyday Life



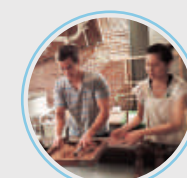
CLC Website

#### Why the Chinese Language Center (CLC) at SU?



##### • Living Combined with Learning

The study area and housing area are located in the same building where students can use the facilities easily while interacting more with staff and classmates—the first floor of the building is the academic area, and the second and third floors are composed of student housing.



##### • Tutoring System

Tutor groups formed by local students provide CLC students with proper assistance. Students can arrange a tutor session in advance according to personal needs and their class schedule and enhance their Chinese language skills through more opportunities for practice outside of class.



##### • Life on Campus

CLC is located at Waishuanghsi Campus. Near the National Palace Museum, among lush green hills with a clear stream flowing by Waishuanghsi Campus offers students a superior study environment. Students can easily access the multiple facilities on campus, including the library, gym, and cafeteria.